

OMED Colorectal Cancer Screening Meeting  
DDW, New Orleans  
15 May, 2004

**Interval (“missed”) neoplasia occurring within a CRC  
screening problem:  
results of the multicenter retrospective cohort study  
(the Japan Polyp Study Workgroup)**

**Yasushi Sano M.D.**

(Chief conductor of the Japan Polyp Study)  
Division of Digestive Endoscopy and  
Gastrointestinal Oncology,  
National Cancer Center Hospital East (NCCHE)

# Newly detected lesions with advanced pathological features after Polypectomy or EMR

Results of the Multicenter Retrospective Cohort Study  
(the Japan Polyp Study Workgroup)

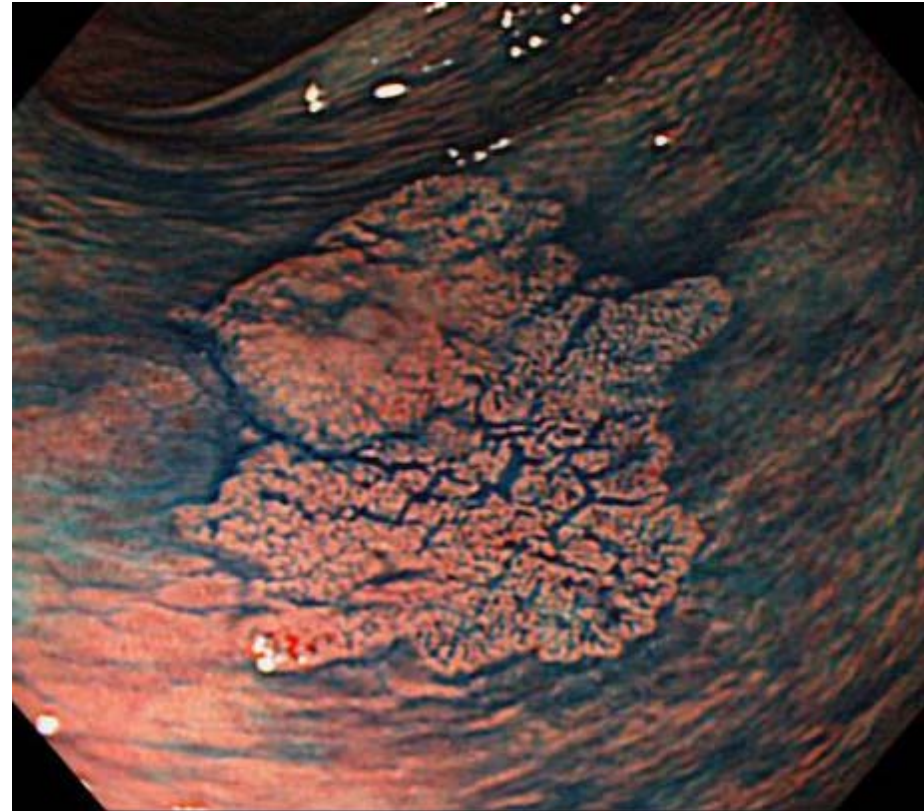
	Type 0			Advanced cancer
	Polypoid (0-Ip, Is)	Non-polypoid		
		0-IIa	0-IIb, IIc	
Newly identified lesion (n=379)	212 (56%)	<b>130 (34%)</b>	<b>18 (5%)</b>	19 (5%)

Of 5309 patients, a total of 379 lesions with advanced pathological features were newly identified during follow-up colonoscopy.

# Endoscopic appearance of Non-polypoid neoplastic lesions

0-IIb

Completely Flat

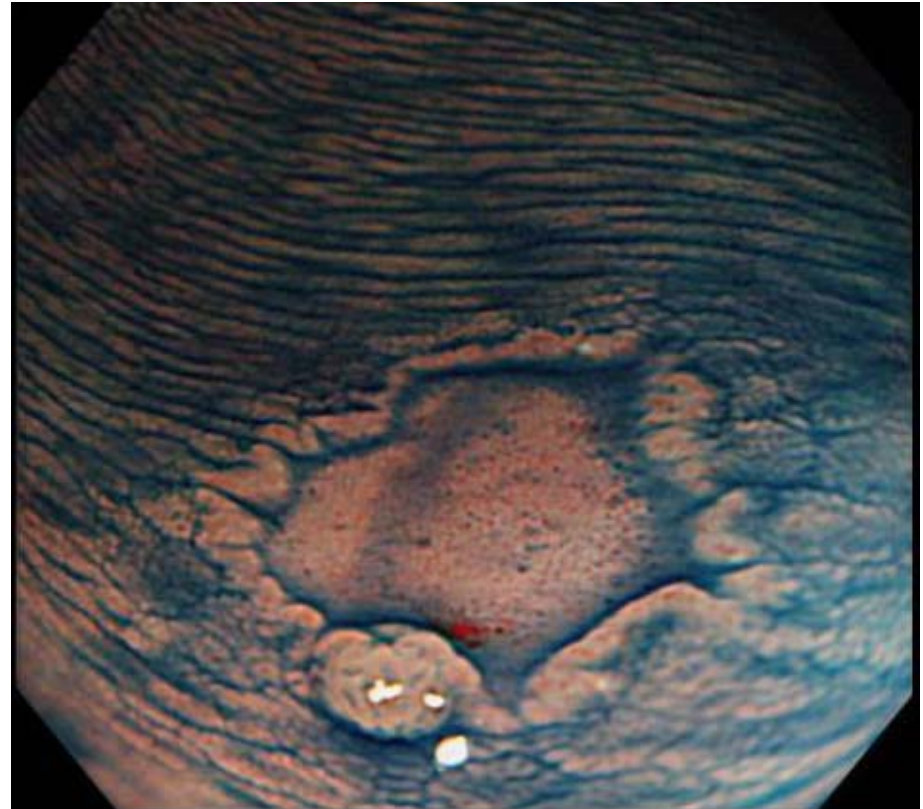


Submucosal invasive cancer (sm3)

## Endoscopic appearance of Non-polypoid neoplastic lesions

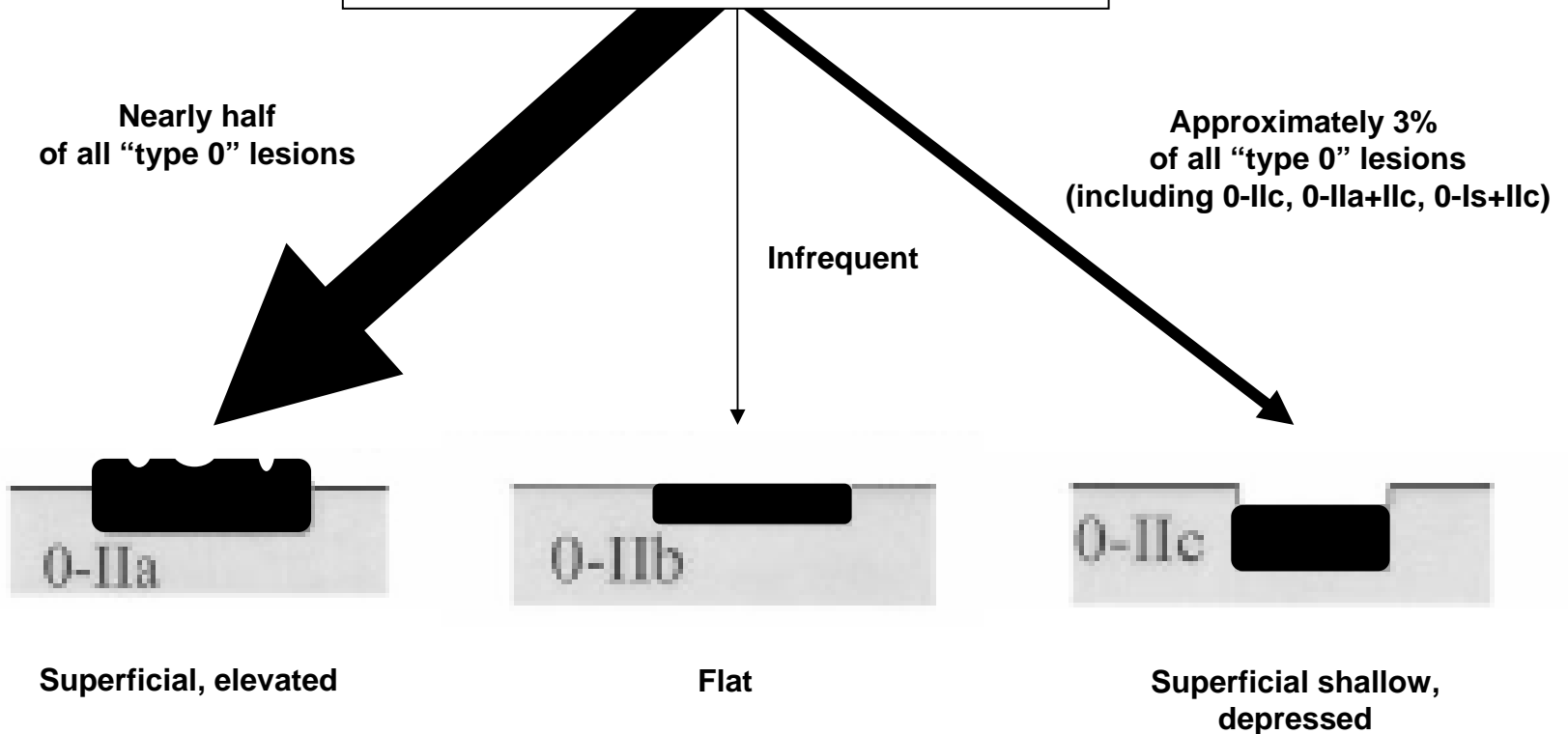


**Superficial shallow,  
depressed**



**Intramucosal cancer (m)**

**Non-polypoid neoplastic lesions  
in “type 0” of the colorectum**



**Non-protruding or non-polypoid neoplastic lesions include the so-called flat lesions. In the flat situation, the lesion, compared with the adjacent mucosa, is either slightly elevated (0-IIa), or completely flat (0-IIb), or depressed (0-IIc).**

# Prevalence of 0-IIC Colorectal Neoplasm

## Multicenter retrospective study in Japan 2002

	Prevalence of 0-IIC	Incidence of HGD
Center 1	2.7% (154 / 5634)	55.2% (47 / 85)
Center 2	2.4% (443 / 18310)	45.2% (139 / 307)
Center 3	2.4% (187 / 8035)	56.8% (75 / 132)
Center 4	1.6% (219 / 13960)	60.9% (89 / 146)
Center 5	1.6% (128 / 8234)	41.0% (32 / 78)
Center 6	1.5% (63 / 4154)	52.1% (12 / 23)
Center 7	1.4% (73 / 5092)	62.5% (30 / 48)
Center 8	0.7% (24 / 3251)	60.0% (3 / 5)
	<b>1.89%</b> (95%CI: 1.78-2.0%)	<b>51.2%</b> (95%CI: 49.1-54.3%)



(Data Enrolled between 1996 and 2001 at each participating center)

# Schematic Overview of the Japan Polyp Study

